



Minut solar farm

Other names: Solar Power Plant Likupang

Minut solar farm is an operating solar photovoltaic (PV) farm in North Sulawesi, Indonesia.

Project Details

Table 1: Phase-level project details for Minut solar farm

Status	Commissioning year	Nameplate capacity	Technology
Operating ^[1]	2019 ^[1]	21 MWac ^[1]	PV ^[1]

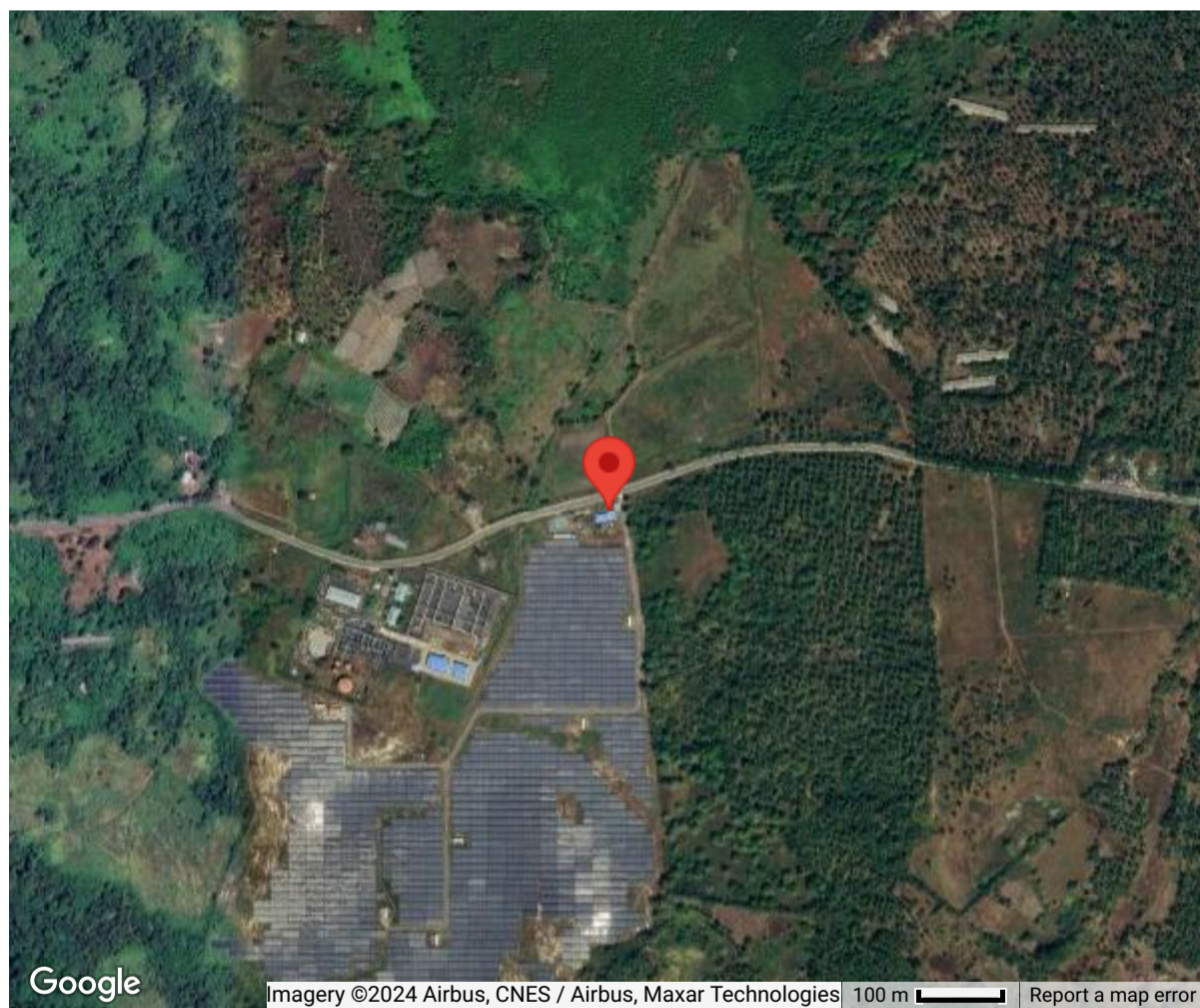
Read more about Solar capacity ratings.

Location

Table 2: Phase-level location details for Minut solar farm

Location	Coordinates (WGS 84)
North Sulawesi, Indonesia ^[2]	1.6587, 125.0964 (exact) ^[2]

The map below shows the exact location of the solar farm:



Articles and Resources

Additional data

To access additional data, including an interactive map of global solar farms, a downloadable dataset, and summary data, please visit the Global Solar Power Tracker on the Global Energy Monitor website.

References

1. <https://web.archive.org/web/20240201113114/https://www.venaenergy.com/news/vena-energy-announces-the-commercial-operation-of-21mw-minut-solar-project-the-largest-ground-mounted-solar-project-in-indonesia/>. Archived from the original on 01 February 2024. ;
2. <https://www.google.com/maps/place/Solar+Power+Plant+Likupang/@1.6564663125.0941522839m/data=!3m1!1e3!4m13!1m7!3m6!1s0x3287b096aa0e487d:0xccd43f4353226126!2sLikupang+Likupang+Il+Likupang+Timur+North+Minahasa+Regency+North+Sulawesi+Indonesia!3b1!8m2!3d1.672033!4d125.055298!3m4!1s0x3287b1373ed2d7db:0xd7187fc216beb02f!8m2!3d1.658704!4d125.0963957>.

This article is part of the
Global Solar Power Tracker, a
Global Energy Monitor project.

[Report an error](#)

Retrieved from "https://www.gem.wiki/w/index.php?title=Minut_solar_farm&oldid=678208"

This page was last edited on 1 June 2024, at 12:14.

Content is available under Creative Commons Attribution-NonCommercial-ShareAlike unless otherwise noted.